

475HE Suburban™

Integral Trap, Siphon Jet, Vitreous China Urinal






Features

- Siphon jet urinal
- 0.5 Gpf / 1.9 Lpf
- 14-5/8" x 21-3/8" x 14-3/8"
- High Efficiency Urinal (HEU)
- Integral trap
- Complete with 3/4" top spud
- Complies with ADA requirements for Accessibility
- The Mansfield® limited lifetime warranty
- Available in white



Model 475HE
(Less flush valve)

Components

Model #	Description	Codes/Standards
475HE	Vitreous china integral trap, siphon jet urinal. Complete with 3/4" top spud, 2" IPS outlet connector and gaskets. Concealed mounting bracket, bolts and washers. Less flushometer. Specify color.	  



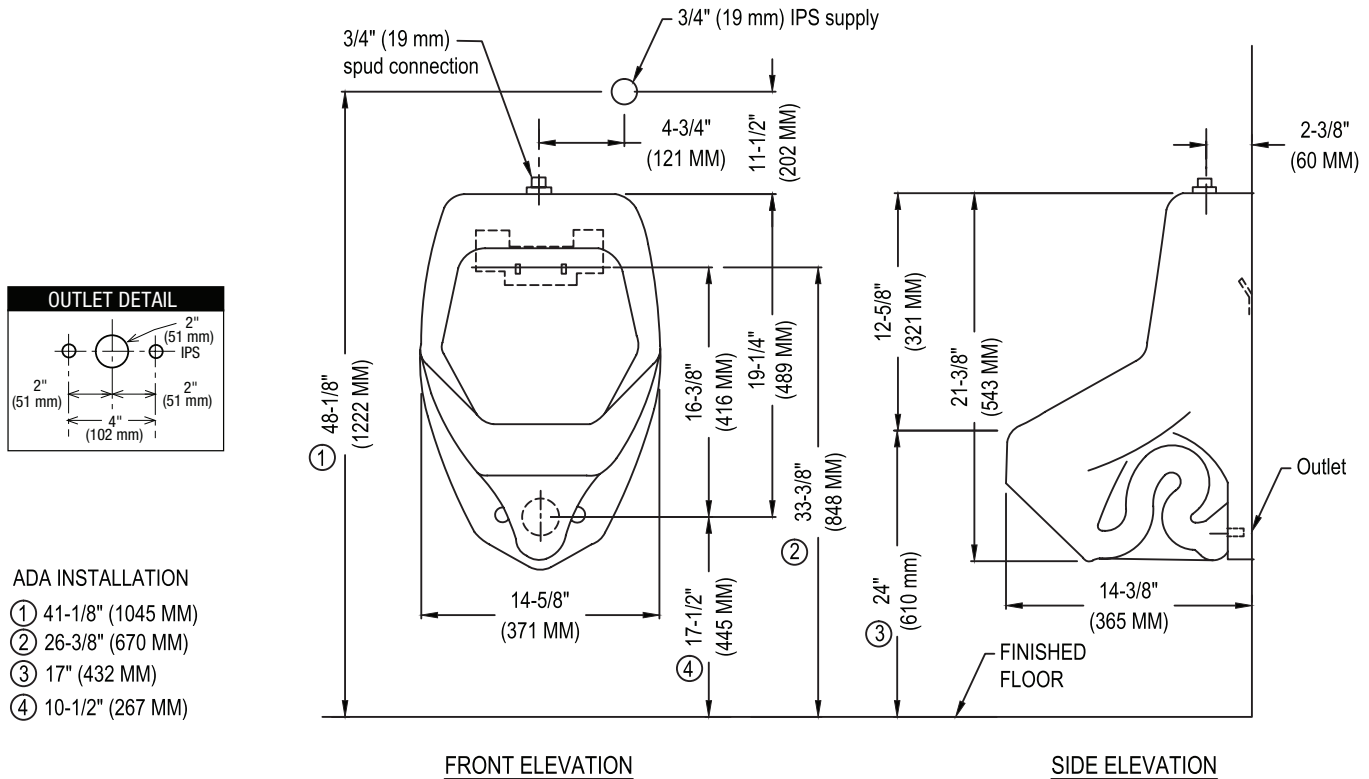
MADE IN USA

Specifications

Model #	Description	Codes/Standards
475HE	Integral Trap, Siphon Jet, Vitreous China Urinal	

Specification	Description	Specification	Description
Material	Vitreous China	Rough-in	Wall-mount
Water Usage	0.5 Gpf / 1.9 Lpf	Shipping Weight	Model 475HE - 35 lbs. (15.9 kg)
Inlet	3/4"	Warranty	Vitreous China - Limited Lifetime
Outlet	2"		

Technical Information



All Mansfield® wall-mount urinals are supplied with this exclusive one-piece steel hanger. Easily installed and adjusted, it contains 7 holes for solid mounting against wall. Anchoring screw must be used for correct installation. Standard plumbing practice recommends use of both mounting bracket and anchoring screws. NOTE: For secure installation, wall-mounting hanger should be fastened to solid support wall stud.

These dimensions are nominal and subject to change without notice.
Fixture performance and specifications meet or exceed ASME A112.19.2-2008/CSA B45.1-08 standards, and other state and local codes.



MADE IN USA