



California Faucets®

# Bel Canto®

## Single Hole Lavatory Faucet

### Features

- 25+ artisan finishes including 12 PVD finishes
- All brass construction
- Single handle operation cartridge with ceramic disc
- Flexible braided hoses for ease of installation
- 1.2gpm (4.5 L/min) max flow rate

### Codes/Standards Applicable

Product meets or exceeds the following:

- ASME A112.18.1/CSA B125.1
- NSF 61, NSF 372, CEC & DOE
- EPA WaterSense
- Commonwealth of MA
- ADA compliant

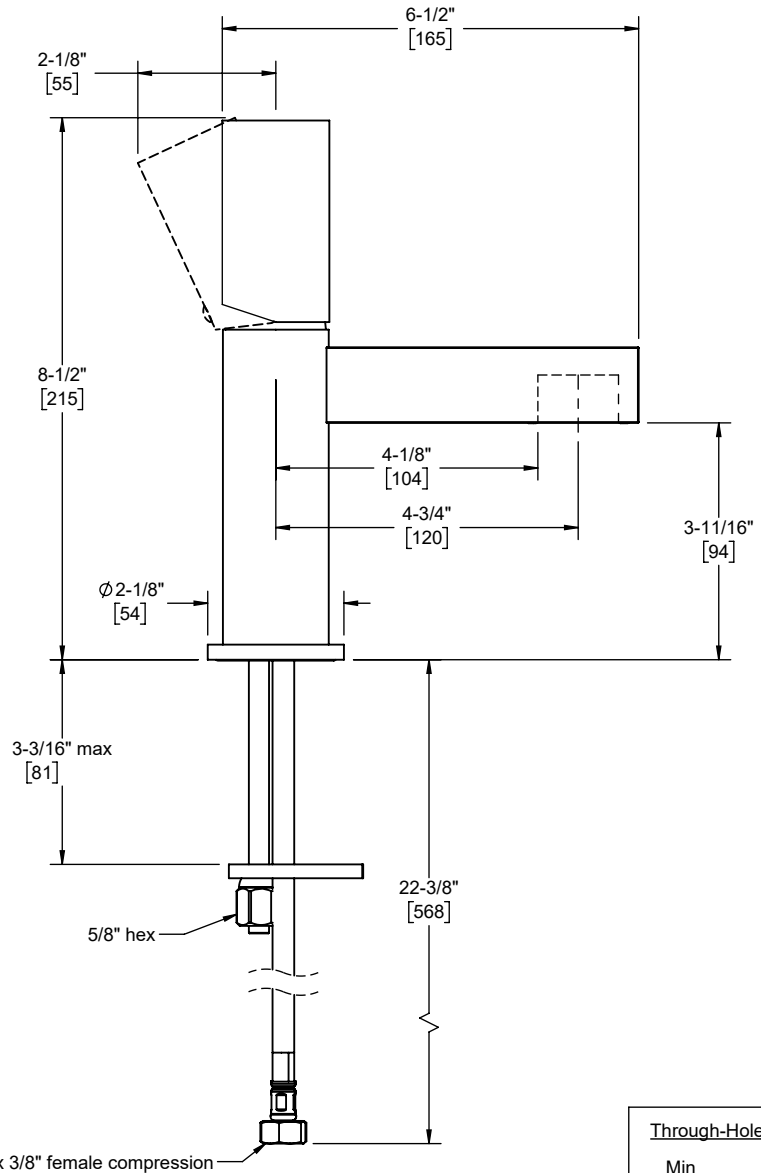


E301BCY-1 shown



E301CY-1 shown

E301CY-1  
E301BCY-1



Through-Hole Specifications	
Min	Recommended
$\varnothing$ 1-1/4" [32]	$\varnothing$ 1-1/2" [38]

Dimensions are inches, rounded to 1/16"  
[Dimensions in brackets are mm, rounded to 1mm]

Specifications subject to change without notice